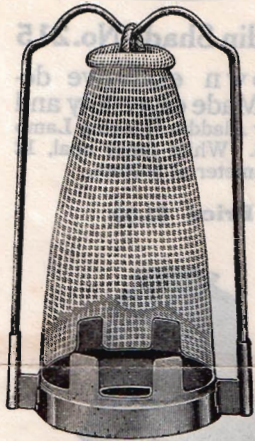


# "Aladdin" Supply and Repair Parts

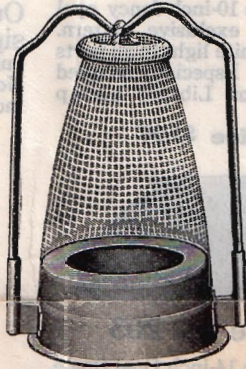
The Aladdin Lamp has been improved from time to time, and to make it convenient for our customers to order supply and repair parts, we have carefully described each part of the different models.

## Mantles



Mantle cut away to show Mounting  
**Aladdin Cap Mantle**—For use on Models No. 1 and No. 2 Aladdin Lamps.

**Price 30c**



Mantle cut away to show Mounting  
**Aladdin KoneKap Mantle**—For use on Models No. 3, No. 4, No. 5 and No. 6 Aladdin Lamps.

**Price 30c**

**NOTE**—Where consumers are unable to secure mantles from our agents or dealers, same will be sent direct from our offices, prepaid by mail or express at the above price in packages of 4, 6 or 12. Remit by Bank Draft, P. O. or Express Money Order. Owing to cost of handling, packing, etc., we cannot accept orders for less than \$1.00 worth of supplies. Mantles do not spoil with age.

It will be easy for you to determine what Model Aladdin you have by referring to the Generators illustrated below.

**WE** aim to establish headquarters for **ALADDIN SUPPLIES** with a reliable merchant at every point where Aladdin Lamps are used.

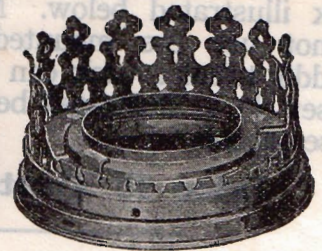
It sometimes happens, however, that a patron is unable to secure Mantles, Chimneys, Wicks or other repairs, and in such instances we shall be pleased to fill orders direct from here at prices quoted in this circular. On account of the expense involved in packing and handling small orders for supplies we have found it necessary to ask that orders be sent to us for no smaller amount than \$1.00. Remittances to be made in advance by P. O. or Express Money Order or Bank Draft. On supply orders for \$1.00 or over we will pay the parcel postage—but if you wish the shipment insured, send 5c additional.

## Galleries



**Gallery for Cap Mantle**—For use only on No. 2 Model Aladdin in connection with Thimble Generator Model No. 2 and Cap Mantle.

**Price 60c**



**Gallery for KoneKap Mantle**—(with chimney band cut partly away.) Used on No. 3, No. 4, No. 5 and No. 6 Model Lamps with KoneKap Mantle only.

**Price 60c**

**Important:** When ordering Mantles, be sure and state whether you want Cap or KoneKap Mantles. It will be easy for you to determine what kind of Mantles you require if you will refer to the illustration above. If you are then in doubt, note the generator used in your lamp, and under the illustration of same shown below you will find the style of mantle you should order.

Add 5c to your remittance if you wish to insure parcel post shipment against loss or breakage. All mail shipments sent at owner's risk unless insured.

## Generators

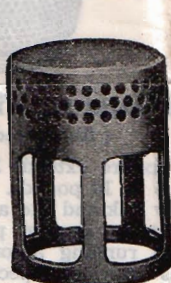


No. 1

### Button Generator

For Model No. 1 Aladdin. Used in connection with the Cap mantle.

**Price 10c**



No. 2

### Thimble Generator

For Model No. 2 Aladdin. Used in connection with the Cap Mantle.

**Price 10c**



No. 3

### Slotted Generator

For Model No. 3 Aladdin. Used in connection with the KoneKap Mantle.

**Price 10c**



No. 4

### Baffle Generator

For Model No. 4 Aladdin. Can be used on Model No. 3 Aladdin. Used in connection with the KoneKap Mantle.

**Price 10c**



No. 6

### Baffle Generator

(Same as No. 5) For Models No. 5 and 6 Aladdin. Used in connection with the KoneKap Mantle.

**Price 15c**



Wick Cleaner

To be used before each lighting. It keeps the wick true and even.

Can be used on all Aladdin lamps except Model No. 1.

**Price 10c**

These Generators are not interchangeable but must be used on the Model Aladdin for which they were designed, except No. 4 Baffle Generator which we recommend for use on Model No. 3 Aladdin. Be sure to note the difference in number of rows of holes in Generators.



## Chimneys

The Standard Aladdin Chimney is 12½ inches long with 2 inch opening at the top inside measurement. It is a high grade chimney, scientifically shaped and proportioned for use on Aladdin Lamps.

**Price 25 Cents Each**

We can supply a 14-inch chimney for use on Aladdin Lamps in especially high altitudes, 5c extra.

## Unmounted Aladdin Wicks

All Aladdin Lamps use the same size and style tubular wick, specially woven. Models No. 3, 4, 5 and 6 take the mounted wick illustrated below. Models 1 and 2 cannot use the mounted wick, but an Aladdin tubular wick can be set in Wick Raiser No. 1, illustrated below, for use on these models.

**Price 10 Cents Each**

## ALADDIN Mounted Wicks

(Illustrated at Right)

With the wick inserted in carrier and charred, ready for use on Models 3, 4, 5 and 6. Packed in individual carton

**Price 20c Each**

## No. 1 Wick Raiser

(Illustrated at Left)

For No. 1 or No. 2 Model Aladdin Lamps.

**Price 15c Each**



## Shades



**Aladdin Shade No. 201**

A pure white 10-inch fancy opal shade. Our exclusive pattern. Diffuses a white light to all parts of the room. Especially adapted to Table or Library Lamp No. 101.

**Price \$1.00**



**Aladdin Shade No. 215**

Our own exclusive design. Made especially and only for Aladdin Hanging Lamp No. 115. White fancy opal, 12 inch diameter at bottom.

**Price \$1.00**



**Shade No. 203**

A pure white 14-inch Opal Dome Shade for use on old style Hanging Lamp No. 102B.

**Price \$1.00**



**Aladdin Shade No. 205**

A pure white, special design, opal shade for our adjustable shade holder lamps Nos. 110-114 inclusive.

**Price \$1.00**

*Add 5c to your remittance if you wish to insure parcel post shipment against loss or breakage. All mail shipments sent at owner's risk unless insured.*

## No. 6 Burner Base

(Illustrated on Right)

For Models No. 3, No. 4, No. 5 and No. 6 Aladdin. Not usable on Model No. 1 or No. 2 Aladdin.

(Thread is different on burner bases for No. 1 and No. 2 Model Lamps.)

**Price \$1.25**



## Extension Fixture No. 1

(Illustrated at Left)

This fixture extends 3 feet and will carry from 5 to 10 pounds. It has an automatic gravity lock and like a curtain roller it will lock at any desired point. It is the only smooth running automatic locking fixture, and is designed especially for our hanging lamps. It has no friction brake. Finished in Satin Brass or Nickel.

**Price \$2.50**



# The Mantle Lamp Company of America

(Incorporated)

Largest Kerosene (Coal Oil) Mantle Lamp House in the World

246 Craig Street West

Montreal, Canada